

# LOOM SOLAR



TOPCon N-Type Bifacial 16BB Module



590 Wp

Maximum Output Power



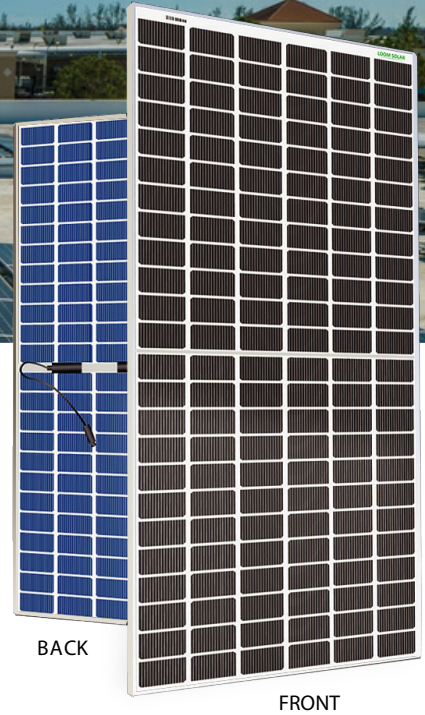
22.80 %

Upto Efficiency



0~+3 Wp

Power Tolerance



## MORE POWER



Advance technology Halfcut - (MBB)



Bifaciality advantage more power from the back side



Better output in low irradiance



Lower temperature coefficient (Pmax): -0.29%/°C, increases energy yield in hot climate



Lower LCOE & system cost

## MORE RELIABLE



Tested as per IEC 61215 & 61730 standard



Minimizes micro-crack impacts



Versatile suitable for Utility, Rooftop, and other general applications



Enhanced Product Warranty on Materials and Workmanship\*



Linear Power Performance Warranty\*

1<sup>st</sup> year power degradation no more than 1%  
Subsequent annual power degradation no more than 0.3%

\*According to the applicable Loom Solar Limited Warranty Statement.

## MANAGEMENT SYSTEM CERTIFICATES\*

ISO 9001: 2015 / Quality management system

## PRODUCT CERTIFICATES\*

BIS / ISO / CE / IEC / AEO



\* The specific certificates applicable to different module types and markets will vary, and therefore not all of the certifications listed here in will simultaneously apply to the products you order or use. Please contact your local Loom Solar sales representative to confirm the specific certificates available for your Product and applicable in the regions in which the products will be used.

## Loom Solar Pvt. Ltd.

Loom Solar is a leading manufacturer of Solar Power Generating Systems/Parts, founded in 2018 by two brothers Amol and Amod Anand. With continuous research and development effort of our team of 150+ highly skilled individuals, we manufacture the cutting edge solar products including solar panel, battery and inverter in India and sell them globally to more than 10 countries through a vast network of 10,000+ dealers and have over.

\* For detailed information, please refer to the Installation Manual.

## ELECTRICAL DATA | STC\*

Specification	Data
Model Specification	SHARK-590
Peak Power, Pmax (Wp)	590
Maximum Power Voltage, Vmp (V)	43.50
Maximum Power Current, Imp (A)	13.570
Open Circuit Voltage, Voc (V)	51.00
Short Circuit Current, Isc (A)	14.450
Module Efficiency (%)	22.80
Power Output Tolerance-Pmax (Wp)	0~+3
Fill Factor	81.91
Bifaciality Factor	0.800

\* Under Standard Test Conditions (STC) of irradiance of 1000 W/m<sup>2</sup>, spectrum AM 1.5 and cell temperature of 25°C.

## ELECTRICAL DATA | NOCT

Specification	Data
Peak Power, Pmax (Wp)	590
Maximum Power Voltage, Vmp (V)	42.50
Maximum Power Current, Imp (A)	12.57
Open Circuit Voltage, Voc (V)	49.00
Short Circuit Current, Isc (A)	13.45
Module Efficiency (%)	22.0
Fill Factor	78.75

\* Under Nominal operating cell temperature (NOCT) of irradiance of 800 W/m<sup>2</sup>, spectrum AM 1.5 and cell temperature of 20°C.

## MECHANICAL DATA

Specification	Data
Cell Arrangement	144 Cells / [12x6    12x6]
Dimensions (mm)	2278 H x 1134 L x 30 D
Area of Module (LxB)	2.58 Sqm
Weight (kg)	32.50 kg
Glass	3.2 mm ARC tempered glass
Frame	Anodized aluminium alloy
Junction-Box	IP68
Cable (mm <sup>2</sup> )	4.0
Connector	MC4

\* For detailed information, please contact your local Loom Solar sales and technical representatives.

## MAXIMUM RATINGS

Specification	Data
Operating Temperature (°C)	25°C±4°C
Max. System Voltage (V)	1500
Max. Series Fuse Rating (A)	30
Fire Rating	Class-C
By Pass Diode Rating	30 amp

## TEMPERATURE CHARACTERISTICS

Specification	Data
Temperature Coefficient (Pmax)	-0.30% / °C
Temperature Coefficient (Voc)	-0.24% / °C
Temperature Coefficient (Isc)	0.046% / °C

## PARTNER SECTION



Please be kindly advised that PV modules should be handled and installed by qualified people who have professional skills and please carefully read the safety and installation instructions before using our PV modules.

\*Installation instruction must be followed. See the installation manual or contact our technical service department for further information on approved installation.  
 \*The specification and key features described in this datasheet may deviate slightly and are not guaranteed. Due to ongoing innovation, R&D enhancement, Loom Solar (India) Pvt. Ltd. reserves the right to make any adjustment to the information described herein at any time without notice. Please always obtain the most recent version of the datasheet which shall be duly incorporated into the binding contract made by the parties governing all transactions related to the purchase and sale of the products described here in.

## ENGINEERING DRAWING (mm)

